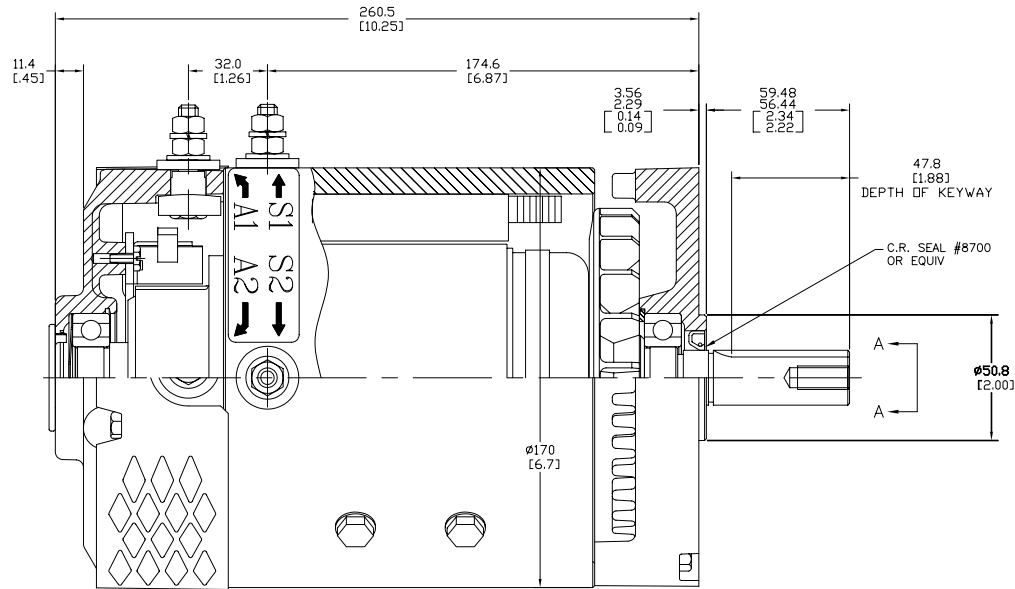


Notes: - Advanced D.C. Motors, Inc. retains proprietary rights in the information disclosed in this drawing. It is issued in confidence for engineering information only and may not be used, in whole or in part, in manufacture copying, alteration or not shown version, reproduction or disclosure in any way without direct written permission from Advanced D.C. Motors, Inc.

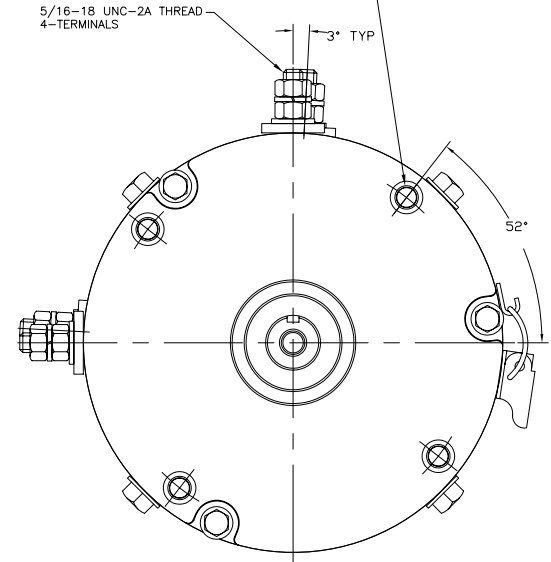
Advanced D.C. Motors, Inc. Syracuse, N.Y. U.S.A.	
PART NO.	PART NO.
A00-4009	A00-4009
VOLT D.C.	CLASS
36	H
RATING	SERIAL NO.
2300 RPM 4.15 HP CONT	

- * NAME LABEL STAMPED WITH CUSTOMER PART No, ADVANCED D.C. MOTORS PART No A00-4009 AND 36 VOLT
- * "2300 RPM 4.15 HP CONT" STAMPED ON NAME LABEL IN RATING BOX
- * CODE DATE STAMPED ON FRAME NEAR NAME LABEL

OUTLINE DIMENSIONS ARE NOMINAL UNLESS TOLERANCES ARE SPECIFIED

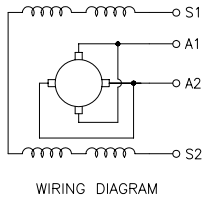


3/8-16 UNC-2B x 15.7/.62 DP MIN THREAD
MIN WITH A 12.7/.50 DIA. x 120°
C'SINK 4-HOLES EQUALLY SPACED ON A
149.23±0.20/5.875±.008 DIA B.C.



- * TEST TO CURVE: C-2
- * CLASS "H" INSULATION
- * FINISH: FRAME - BLACK PAINT
END HEADS - NATURAL ALUMINUM
- * HEADBAND MATERIAL: ALUMINUM
- * VENTILATED MOTOR WITH FAN
- * MOTOR WEIGHT: 21 KG / 46 LBS
- * THIS MOTOR IS A REPLACEMENT FOR A89-4001

36 VOLT

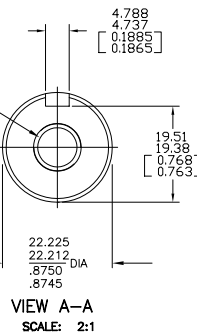


ROTATION - REVERSIBLE

C.W.D.E.
CONNECT S1 TO ONE BATTERY TERMINAL
CONNECT S2 & A1
CONNECT A2 TO OTHER BATTERY TERMINAL

C.C.W.D.E.
CONNECT S1 TO ONE BATTERY TERMINAL
CONNECT S2 & A2
CONNECT A1 TO OTHER BATTERY TERMINAL

3/8-16 UNC-2B x 21 ±.8/.83 ±.03 DP THD
WITH A .8/.03 x 45° CHAMFER



Zone Rev		Was		By	Date	MILLIMETER / INCHES OR MILLIMETER INCHES		PROJECTION THIRD ANGLE		Material Ref A89-4001 This print is the property of Advanced D.C. Motors, Inc. and supersedes all prints previous to last revision. Do not scale-work to dimensions.		Advanced D.C. Motors, Inc. Syracuse N.Y.	
D		CORRECT HOLE SIZE, POR 4150		SMR	10/25/02	MILLIMETER / INCHES		PROJECTION		Name TRACTION MOTOR OUTLINE SIZE D FULL Scale PJB Drawn Date 01-26-00		Part No A00-4009	